

edgEVOLUTION™

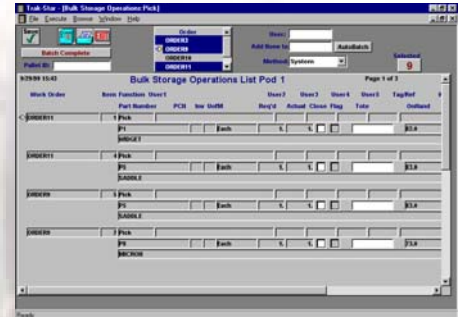
The edgEVOLUTION™ (Evolution) Single User Inventory Software System, by E.D.G. Enterprises, Inc., (EDGE) is a single-PC system developed exclusively for companies who want inventory control and/or maintenance management features, but don't need a complete warehouse management system. With functionality that is quite formidable for a small system, you'll be surprised at the value and return-on-investment you'll enjoy with this product.

EVOLUTION is designed on the most user-friendly software platform available on the market - Windows. It runs on one inexpensive personal computer. EVOLUTION's point & pick aspects and touch-screen capabilities make inventory and maintenance management simple, precise, and accurate.

There are two basic EVOLUTION packages. EVOLUTION Bulk will maintain control of your bulk area. EVOLUTION ASRS will control one pod of carousels or ASRS. The Maintenance Management features are optional for both systems.

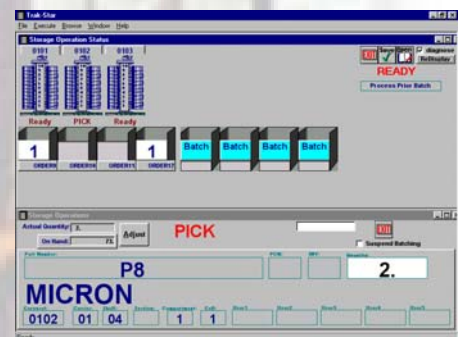
Stockroom Operations

- Simultaneous Pallet, Case, & Split Case picking.
- Multiple Storage Locations with FIFO by receipt date or lot number.
- Manage raw materials and finished goods.
- Define and pick assemblies/kits.
- Batch pick an unlimited number of orders.
- Min and max storage levels, supplier info, weight, volume, shelf life, and tracking by tote ID.
- Unlimited number of container configurations.
- Work interleaving.
- Optimized sequencing by location.



Automated Storage Media

- Horizontal & Vertical Carousels, and Vertical Lift Modules.
- Light Trees & Put Bars.
- Static or Dynamic Batch Picking.
- Batch Replenish, Batch Relocate, & Batch Transfer work orders.
- Hot Picks, Cycle Counting, and Off-Carousel picking.
- Fully Bar Code and Weigh scale integrated.
- Pull predefined assemblies/kits.
- Optimizes pick sequence and tracks by tote ID.



Maintenance Management

- Define, build, and pick Preventive Maintenance (PM) kits.
- Issue repair kits.
- Schedule PM by numbers or areas.
- Issue tools and track destination and end-users.
- Track calibrations by expiration date and lead time for re-calibrations.
- Primary & secondary supplier information.
- Track usage & dollars by equipment.
- Maintain labor hour statistics for repairs.
- Schedule inspections.
- Generate component inspection histories.
- Large variety of schedule criteria.
- Download inspections from host.
- Manually define inspections.
- Reject failed parts.
- Disposition rejected parts by writing reports.



Process Manager

- Audit trail processing.
- Ergonomic storage criteria based on part 'hit' frequency.
- Security Access and maintenance.
- Database maintenance.
- Message Center.
- Quick-load utility.
- Configure system layout, configure components, and define assemblies.
- Host Computer Uploads Work Results.
- Host Computer Downloads Work Orders.
- Manual work order generation.
- Manual work order modifications.
- High number of search functions with secondary sorting features.
- Set FIFO by receipt date or lot number.
- Split screen and printed reports with formatted data and graphs.
- Numerous standard reports.
- Optional ad-hoc report utility.

Preferences Functions

- Preferences icon-driven menu for system configuration.
- Usually a one-time set-up of system parameters.
- Like all of our software, this menu lends itself to touch screen.

On-Line Help

If you've used a Windows-based on-line help utility, you know the power you have at your fingertips. Windows On-Line Help eliminates the need for paper documentation. Its functions include:

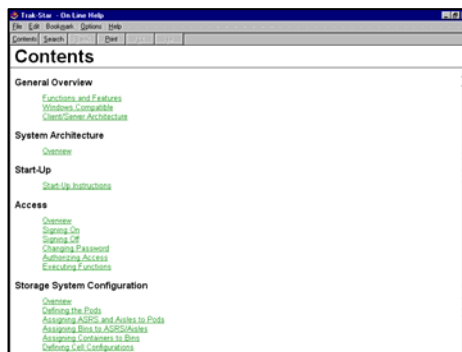
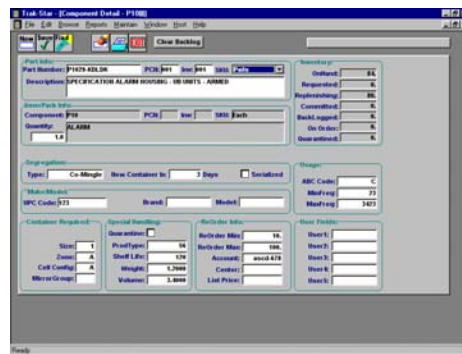
- Annotate a Help Topic.
- Choose a Jump.
- Copy a Help Topic onto the Clipboard.
- Define and Use Bookmarks.
- Open other Help Files.
- Print a Help Topic.
- Scroll Through a Help Topic.
- Search for a Help Topic.
- View an Application and Help Together.

Host Interface

- ASCII flat file transfer.
- Interface to most hosts such as MRPII and Financial systems.

Documentation

- Host Interface Specifications.
- User's Manual.
- User's Manual in On-Line Help.



Service Options

EDGE realizes the absolute need to provide the best service possible, before, during, and after the installation. Our service includes:

- Integration & Training
- A one year limited warranty.
- Remote Dial-In or Internet modem support.
- 3 year version control.
- Extended warranty contracts.

At EDGE, we developed several software packages with our customers in mind. When you said "I need inventory control now, but don't need a warehouse management system quite yet" and, "I need a package that will grow with me in the future" -- we listened. We want to help businesses of all sizes, and don't think you should invest in something until you need it.

EVOLUTION Single User is a great beginning step into the world of inventory and maintenance management. It is user-friendly, adaptable, and will definitely cost you less to implement and maintain than other comparable packages. It is clearly, to coin a phrase, "leading-EDGE."

EVOLUTION Single User will adapt to your operations, streamline your business, help you with your mission critical items, and help you get the right product to the right customers.

So if you're concerned with product delivery, lost revenues due to part shortages, high labor costs, and your competition, EVOLUTION Single User could be the answer you're looking for.

Take market share. When it comes to right-sizing your system, we'll give you the EDGE you need!