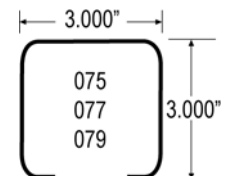
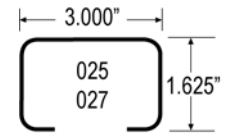
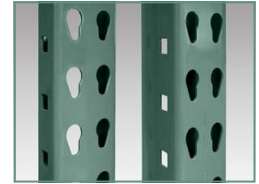


## Interack 30 Welded F Punch Frame Capacity Chart

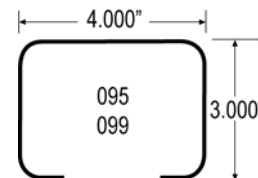
(Available from Pontiac, IL, Sumter, SC, Matamoros, Mexico, and Mexicali, Mexico)

Maximum Unsupported Length <sup>(1)</sup>	025 <sup>(2)</sup> 13 Gauge 0.090" thk Capacity	070 14 Gauge 0.070" thk Capacity	075 13 Gauge 0.090" thk Capacity	077 12 Gauge 0.105" thk Capacity	079 11 Gauge 0.120" thk Capacity
36"	23,400	28,600	38,400	44,300	50,000
42"	21,900	25,900	34,600	39,800	44,900
48"	19,300	23,000	30,600	35,200	39,700
54"	16,700	20,000	26,400	30,400	34,300
60"	15,000	17,700	23,100	26,600	30,000
66"	13,400	16,000	20,900	24,000	27,100
72"	11,700	14,400	18,700	21,400	24,100
78"	10,300	12,800	16,500	19,000	21,300
84"	9,100	11,400	14,700	16,900	19,000
90"	8,000	10,200	13,100	15,100	16,900
96"	7,100	9,200	11,800	13,500	15,200



(Available from Pontiac, IL Only)

Maximum Unsupported Length <sup>(1)</sup>	095 13 Gauge 0.090" thk Capacity	099 11 Gauge 0.120" thk Capacity
36"	37,500	60,200
42"	37,500	60,200
48"	36,300	57,900
54"	33,900	53,200
60"	31,300	48,400
66"	28,500	43,500
72"	25,800	38,700
78"	23,200	34,500
84"	21,700	31,900
90"	20,100	29,400
96"	18,600	26,800



<sup>(1)</sup> Maximum unsupported length is measured from the floor to the top of the first beam or the maximum beam spacing (whichever is greater).

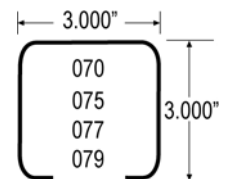
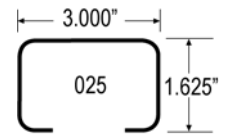
- Frame capacities are shown and are for product load plus dead load (dead load = 2.0% of product load).
- Capacities are per the 2002 RMI and the 2001 AISI specifications.
- Load factors are 1.4 for product load and 1.2 for dead load.
- Maximum unsupported length is measured from the floor to the top of the first beam or the maximum beam spacing (whichever is greater).
- Capacities are only valid when used with Interlake published beam sizes.
- Capacities are not valid for free standing frames that have an H/D ratio greater than 6.0 where H is the distance from the floor to the top of the beam and D is the frame depth.
- Capacities are valid for static load only.
- These capacities assume that all component parts are (1) manufactured by Interlake, (2) in good condition, and (3) properly installed.



## Interack 30 Welded U Punch Frame Capacity Chart

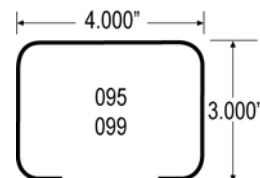
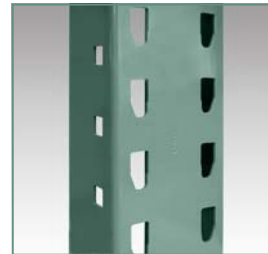
(Available from Pontiac, IL, Sumter, SC, Matamoros, Mexico)

Maximum Unsupported Length <sup>(1)</sup>	025 <sup>(2)</sup> 13 Gauge 0.090" thk Capacity	070 14 Gauge 0.070" thk Capacity	075 13 Gauge 0.090" thk Capacity	077 12 Gauge 0.105" thk Capacity	079 11 Gauge 0.120" thk Capacity
36"	25,000	30,900	41,600	48,000	54,300
42"	24,500	28,100	37,400	43,100	48,800
48"	21,600	25,000	33,000	38,100	43,000
54"	18,700	21,700	28,700	33,000	37,300
60"	16,800	19,100	25,100	28,900	32,600
66"	15,000	17,400	22,700	26,100	29,500
72"	13,300	15,600	20,300	23,300	26,200
78"	11,600	13,900	18,000	20,600	23,200
84"	10,300	12,400	16,000	18,400	20,600
90"	9,100	11,100	14,300	16,400	18,400
96"	8,000	10,000	12,800	14,700	16,500



(Available from Pontiac, IL Only)

Maximum Unsupported Length <sup>(1)</sup>	095 13 Gauge 0.090" thk Capacity	099 11 Gauge 0.120" thk Capacity
36"	39,600	63,200
42"	39,600	63,200
48"	39,000	62,200
54"	36,300	57,200
60"	33,500	52,000
66"	30,600	46,800
72"	27,600	41,600
78"	24,900	37,000
84"	23,300	34,300
90"	21,600	31,600
96"	19,900	28,800



<sup>(1)</sup> Maximum unsupported length is measured from the floor to the top of the first beam or the maximum beam spacing (whichever is greater).

<sup>(2)</sup> For beam lengths over 108" used with 025 frames, reduce capacity by 7.0% (0.93 multiplier).

- Frame capacities are shown in lbs. and are for product load plus dead load (dead load = 2.0% of product load).
- Capacities are per the 2002 RMI and the 2001 AISI specifications.
- Load factors are 1.4 for product load and 1.2 for dead load.
- 070 frames are not to be used with beams subjected to ledge loading in excess of 7000 lbs. per pair.
- 070 frames are not recommended for high abuse applications unless column protection is used.
- Capacities are only valid when used with Interlake published beam sizes.
- Capacities are valid for static load only.
- These capacities assume that all component parts are (1) manufactured by Interlake, (2) in good condition, and (3) properly maintained.

