

MODEL SZA192CDA MEDIUM DUTY CHAIN DRIVEN ZERO PRESSURE ACCUMULATOR

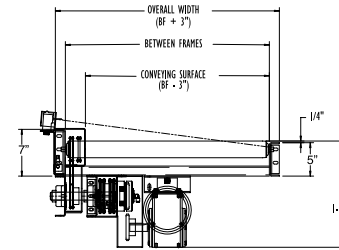
AIR CLUTCH OPERATED ZONES

42

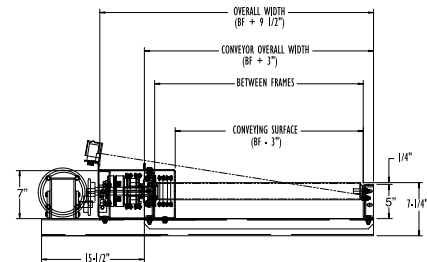


Conveyor shown with optional supports

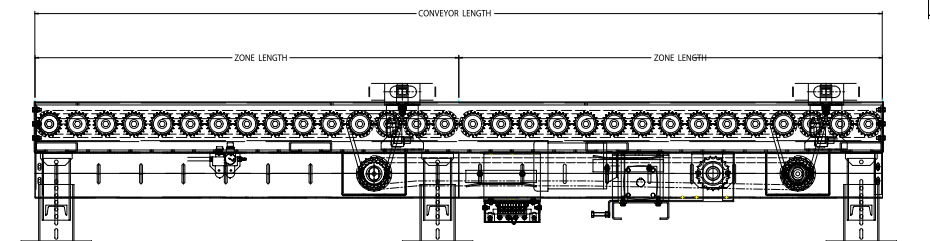
SZA192CDA SMART ZONE® is a medium duty roll-to-roll chain driven zero pressure accumulator, designed to safely accumulate medium duty loads in 5' zones. Roach SMART ZONE® incorporates photo electric sensors to detect product loads instead of sensor rollers--which eliminates many problems associated with sensor rollers. Products do not touch during accumulation and are singulated individually off of conveyor. SMART ZONE® is easy to install and simple to maintain.



SZA192CDA AIR CLUTCH UNDERNEATH



SZA192CDA AIR CLUTCH SIDEMOUNT



SMART ZONE:

Retroflective photo eyes include a 24V DC power supply operated by a 110V AC input.

SPECIFICATIONS

TREAD ROLLERS: 1.9" dia. x 12 ga., model 192S.

CHAIN DRIVE: Roller-to-roller No. 40 roller chain. Zone-to-zone No. 60 roller chain.

CHAIN GUARD: All chains are completely enclosed along the entire length of conveyor.

CENTER DRIVE: Drive either side mounted or underside mounted (specify). Drive shafts are supported by precision, heavy duty, lubricated, ball bearing units.

ROLLER CENTERS: 4" or 6" RC ONLY.

SPEED: 35 FPM, constant.

ACCUMULATION ZONE: 5'-0" zone lengths, zone singulation operation, photo electric sensor controlled zones with air clutch. (60 psi max)

BED: 6-1/2" x 1-1/2" x 10 ga. and 4-1/2" x 1-1/2" x 10 ga. formed steel channel frame. Bed sections are bolted together with butt couplings and floor supports.

BEARINGS: Removable type, heavy duty ball bearings, zinc-plated, grease packed, labyrinth seal.

FRL: Unit is provided with filter, regulator and lubricator with 3/8" ports for 60 PSI operational pressure.

MOTOR DRIVE: 1/3 HP, 230/460/3, 60 cycle, ODP right angle gear motor.

CAPACITY: 300 lbs./ft. up to a maximum of 1200 lb. pallet load.



SPECIFICATION TABLE

■ 6 week shipment

CONVEYOR LENGTH		5'	10'	15'	20'	25'	30'	35'	40'	50'	60'	70'	80'	90'	100'
BF	Conv. Surface	UNIT WEIGHTS (lbs.) with 4" Roller Centers													
15"	12"	471	761	1051	1341	1632	1922	2212	2502	3083	3663	4244	4824	5405	5986
21"	18"	511	832	1154	1476	1797	2119	2441	2762	3406	4049	4692	5336	5979	6622
27"	24"	561	922	1284	1646	2006	2369	2728	3093	3816	4539	5262	5977	6706	7435
33"	30"	609	998	1405	1802	2200	2598	2996	3393	4189	4985	5780	6582	7379	8176
39"	36"	648	1075	1502	1929	2357	2784	3211	3638	4493	5347	6202	7056	7915	8774
45"	42"	693	1156	1618	2081	2544	3007	3469	3932	4857	5783	6709	7634	8568	9502
51"	48"	733	1226	1720	2213	2707	3199	3693	4186	5173	6159	7146	8133	9132	10131
		Unit weights (lbs.) with 6" roller centers													
15"	12"	441	711	971	1241	1502	1772	2032	2302	2833	3363	3894	4424	4955	5486
21"	18"	477	772	1061	1356	1644	1939	2227	2522	3106	3680	4272	4856	5439	6022
27"	24"	517	842	1161	1486	1804	2129	2448	2773	3416	4059	4702	5337	5986	6635
33"	30"	548	898	1252	1602	1948	2298	2643	2993	3689	4385	5080	5789	6479	7176
39"	36"	590	965	1334	1709	2079	2454	2823	3198	3943	4687	5432	6176	6925	7674
45"	42"	626	1026	1421	1821	2217	2617	3012	3412	4207	5003	5799	6594	7398	8202
51"	48"	661	1086	1508	1933	2354	2779	3201	3626	4473	5319	6166	7013	7872	8731

OPTIONAL EQUIPMENT

ZONE LENGTHS: 3' through 10' in 4" or 6" increments as per roller centers and zone chain pitch. Frame lengths will vary with zone lengths.

BED: 6-1/2" x 1-1/2" x 7 ga. and 4-1/2" x 1-1/2" x 7 ga. formed steel channel frame.

TREAD ROLLERS: 1.9" dia. x 9 ga. steel, model 199S tread rollers.

FLOOR SUPPORTS: Supports, knee braces, casters and polytier supports available. See Conveyor Accessories.

SIDE MOUNTED CLUTCH: Consult factory for low elevation model SZ192CDAS with side mounted clutch.

SPEED: Constant speed 20-120 FPM; DC variable speed; AC inverter variable speed. Other constant or variable speeds available. Minimum unit speed is 20 FPM for model CDA. **NOTE: CAPACITY CHANGES WITH SPEED.**

MOTORS: Available through 3 HP in TEFC, explosion proof, dirty duty, brake motor, 115/230/1, 575/3, etc.

DEFUSED SMARTZONE: Photoeyes mounted below tread rollers.

