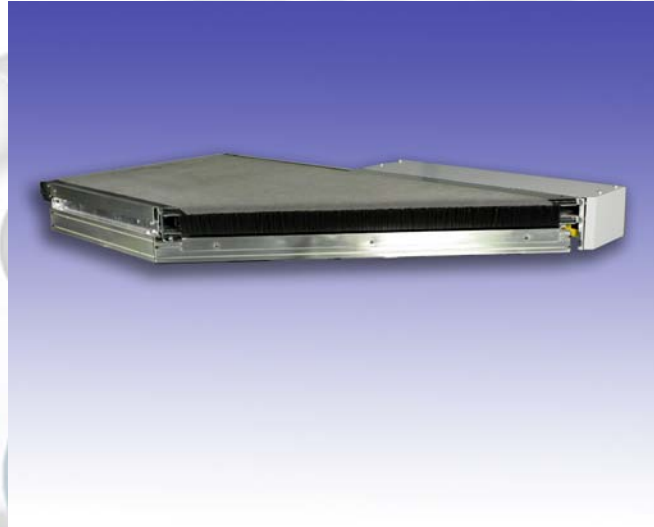


Belt Merge / Divert

patented worldwide

TS4200



Product Overview

The TRANSNORM TS4200® 30°/45° Belt Merge/Divert Conveyor provides smooth controlled flow for sortation induction lines as well other merging and diverting applications. The TS4200® is available in either 30° or 45° and either left or right handed configurations.

Applications

- Airports
- Distribution Centers
- Express Packaging

Longest warranty in industry
Lowest energy consumption - up to 50% less
Quietest operation - less than 68 dBA
Lower preventative maintenance - up to 10 % less
Now available with Pin-n-Go™ quick change belt

Advantages

- Hex shaped, hardened polished chrome nosebar reduces belt friction
- Patented self tracking design
- Low profile, aluminum frame construction
- Standard pre-punched butt angles available - connect in-line section of junction to conveyor
- Standard photoeye / reflector bracket and dimpled holes available
- High quality, pre-stretched Euro Style Belting
- Unique frame design allows for quick changing of endless belt
- Pin-n-Go™ quick change belts are also available

Transnorm System Inc.
2810 Avenue E East
Arlington, Texas 76011 USA
Telephone 972-606-0303
Facsimile 972-606-0768
Web <http://www.transnorm.com>

Belt Merge / Divert

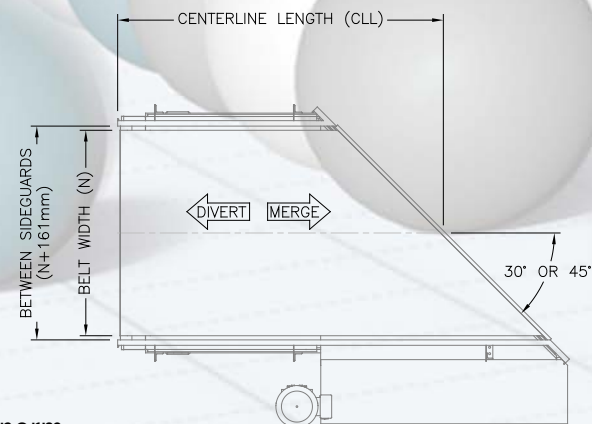
patented worldwide

TS4200

Technical Specifications

Maximum CL length	74.8" [1900mm]
Maximum Width	47.2" [1200mm]
Maximum Load	40 lbs/LF
Maximum Speed	500 FPM
Pulley	Urethane lagged steel
Standard Bearings (take-up)	Medium-duty lubed-for-life precision ball bearings
Belt Type	European style, Novo-25 HC
Operating Noise	<68 dBA
Drive Mounting	Shaft-mounted
Operating Modes	Constant Run or Start/Stop (up to 45 per minute)

Width	Minimum CL Length	
	30°	45°
11.8" [300mm]	33.1" [842mm]	25.9" [659mm]
15.8" [400mm]	36.6" [929mm]	27.9" [709mm]
19.7" [500mm]	40.0" [1016mm]	29.9" [759mm]
23.6" [600mm]	43.4" [1102mm]	31.9" [809mm]
27.6" [700mm]	46.8" [1189mm]	33.8" [859mm]
31.5" [800mm]	50.2" [1275mm]	35.8" [909mm]
39.0" [990mm]	56.7" [1440mm]	36.0" [914mm]
39.4" [1000mm]	57.0" [1449mm]	39.7" [1009mm]
47.2" [1200mm]	63.9" [1622mm]	43.7" [1109mm]



For applications that fall outside the above listed standards contact Transnorm.

Available Accessories

- Side Guards up 24" [610mm] high (also Standard butt angles and photo eye holes/brackets)
- Standard interfaces available for all standard horizontal diverters
- Transfer Brush at tail end to smooth product transfer
- Drive packages – Special options per customer request
- Paint – Color matching to customer paint sample
- Common frame available to support multiple in-line TS4100/100 Queue Merge units
- Supports – Multiple leg and hanger styles to accommodate all heights

Transnorm System Inc.
 2810 Avenue E East
 Arlington, Texas 76011 USA
 Telephone 972-606-0303
 Facsimile 972-606-0768
 Web <http://www.transnorm.com>

