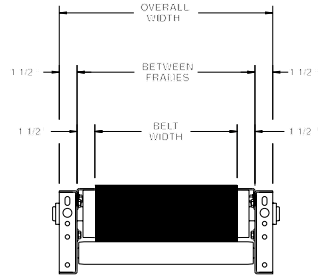
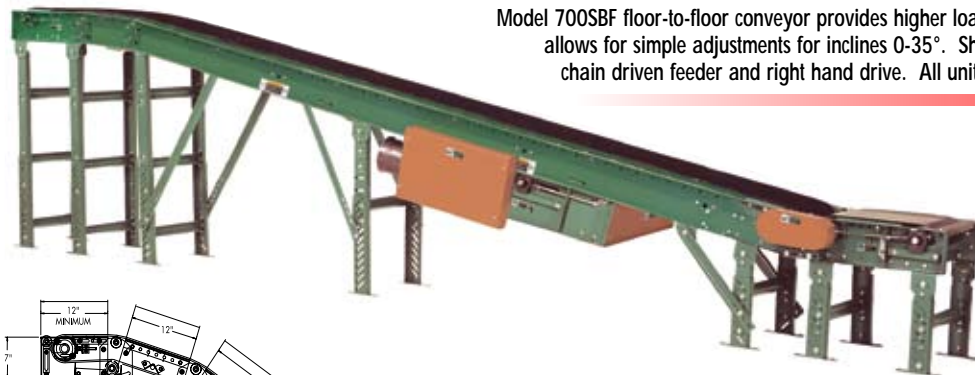


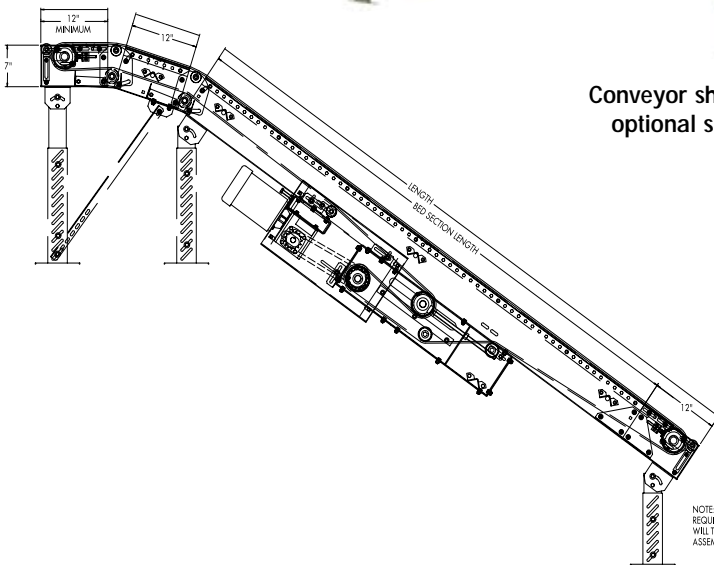
# MODEL 700SBF SLIDER BED INCLINED FLOOR-TO-FLOOR BELT CONVEYOR

24 HOUR SHIPMENTS INCLUDE ALL 1-FOOT INCREMENTS 10'-0" TO 50'-0"

Model 700SBF floor-to-floor conveyor provides higher load capacity, reversible flow and nose-over allows for simple adjustments for inclines 0-35°. Shown with optional supports, knee braces, chain driven feeder and right hand drive. All units furnished standard with left hand drive.



Conveyor shown with optional supports



NOTE: WHEN CHAIN FEEDER IS REQUIRED END DRIVE ASSEMBLY WILL TAKE PLACE OF FIXED END ASSEMBLY FOR CONNECTION.

HP@ 60 FPM	"A" MAX		"B" MAX	
	4" DRV.	8" DRV.	4" DRV.	8" DRV.
1/3	16-5/8"	17-5/8"	58-5/32"	58-5/32"
1/2	16-5/8"	17-5/8"	58-5/32"	58-5/32"
3/4	17"	17-5/8"	58-25/32"	58-25/32"
1	17-1/4"	17-5/8"	59-17/32"	59-17/32"
1-1/2	18-1/8"	18-1/8"	61-21/32"	61-21/32"
2	19"	19"	62-21/32"	62-21/32"

## SPECIFICATIONS

**BELTING:** Black PVC ruff-top.

**DRIVE PULLEY:** 8" dia. with 1-7/16" dia. shaft, both machine crowned and fully lagged.

**TAIL PULLEY:** 4" dia., machine crowned, with 1-3/16" dia. shaft.

**RETURN ROLLERS:** 1.9" dia. x 16 ga. steel, model 196S, adjustable.

**CENTER DRIVE:** Reversible drive with 24" integral belt take-up.

**BELT SPEED:** 60 FPM, constant.

**SAFETY POP-OUT ROLLER:** Standard on both ends, 1.9" dia. x 16 ga. steel roller, model 196S.

**NOSE-OVER:** Provides smooth transition from incline to horizontal position. Single nose-over adjusts 0-20°; double nose-over adjusts 0-35° (specify single or double).

**BEARINGS:** All pulley bearings are precision, heavy duty, lubricated, ball bearing units with cast iron housings.

**BED:** 7" x 1-1/2" x 12 ga. channel frame with 14 ga. slider bed 9"-39" BF; 12 ga. bed 33" BF and above with bed pan braces.

**ROLLER CHAIN:** Drive pulley is driven by No. 50 roller chain for 1-1/2 HP or less and No. 60 chain on larger drives. Chain take-up provided on motor base.

**MOTOR DRIVE:** 1/3 HP, 230/460/3, 60 cycle, ODP right angle gear motor.

**FLOOR SUPPORTS:** Optional.

**ELECTRICAL CONTROLS:** Optional.

### ⚠ WARNING

Prevent pinch points that exist when belt conveyors are permanently attached to other conveyors or equipment!



**SPECIFICATION TABLE**

■ 24 hour shipment ■ 2 week shipment

CONVEYOR LENGTH			10'	15'	20'	25'	30'	35'	40'	45'	50'
BELT	BF	OAW	Units weights (lbs.)								
6"	9"	12"	265	290	331	366	395	430	459	494	526
12"	15"	18"	299	344	386	431	473	518	560	605	654
18"	21"	24"	369	439	506	576	641	711	779	849	926
24"	27"	30"	422	502	568	648	728	808	887	967	1059
30"	33"	36"	434	539	608	713	782	887	956	1061	1146
36"	39"	42'	477	597	672	792	872	992	1071	1191	1312
42"	45"	48"	520	655	736	871	960	1095	1186	1321	1478
48"	51"	54"	563	713	800	956	1049	1202	1301	1454	1644

**OPTIONAL EQUIPMENT**

**BELTING:** 3 ply, brown neoprene ruff-top. Consult factory for other belting.

**SIDE MOUNTED END DRIVE:** Available as option when necessary to move center drive for unit clearance. Minimum horizontal nose-over length required is 3' (2' horizontal may be used if product does not overhang conveyor OAW).

**BED:** Available in boxed slider bed.

**UNDERTRUSSED BED:** Available to provide clearance underneath unit at bed joint locations. Specify location for undertrussing and desired clearance underneath unit. Consult factory.

**FLOOR SUPPORTS:** Various height adjustable supports and knee braces available. See Conveyor Accessories.

**POWERED FEEDER:** Integral belt feeder or separate chain driven belt feeder.

**MOTORS:** Available through 3 HP in TEFC, explosion proof, dirty duty, brake motor, 115/230/1, 575/3, etc.

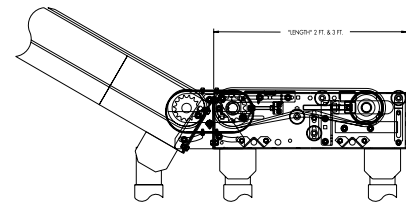
**CEILING HANGERS:** 5/8" dia. threaded rod w/ hardware to attach rods (specify rod length) to conveyor. See Conveyor Accessories.

**GUARD RAILS:** 1-3/4" x 1" formed channel (model GC), adjusts horizontally to 10" wider than belt and vertically to 6" above belt; formed steel fixed (model FSG in 2", 4", 6", 8", 12", and 18" heights. See Conveyor Accessories.

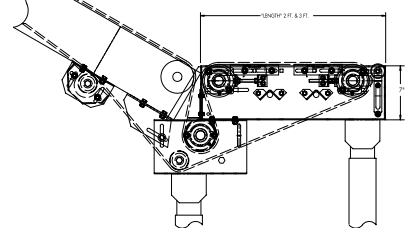
**BELT SPEED:** Constant speed 3-120 FPM; DC variable speed; AC inverter variable speed. Other constant or variable speeds available. **NOTE: CAPACITY CHANGES WITH SPEED.**

**ELECTRICAL CONTROLS:** Magnetic starter (one direction or reversible); One direction manual starter; Momentary start/stop push button station; Forward/reversing/stop push button station.

Chain Feeder



Integral Feeder



OPTIONAL CHAIN DRIVEN FEEDER



OPTIONAL INTEGRAL FEEDER

