

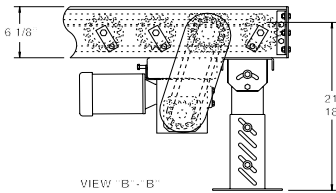
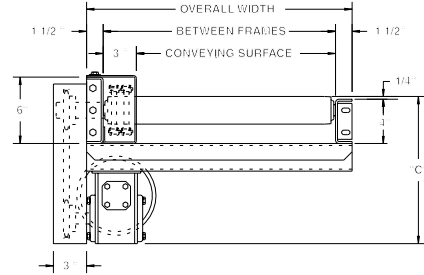
MODEL 251CDLRC HEAVY DUTY CHAIN DRIVEN LIVE ROLLER CURVE



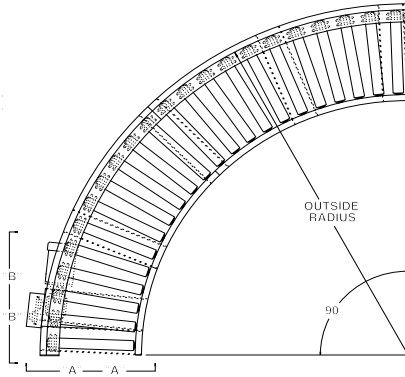
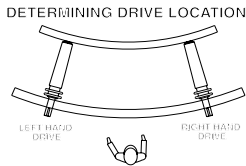
Conveyor shown with optional supports

251CDLRC, heavy duty chain driven live roller curve, transports heavy unit loads. Heavy castings, drums and other loads not requiring product orientation may be effectively conveyed on this conveyor.

SPECIFY MODEL NUMBER PER EXAMPLE
251CDLRC-39-90-L
 251CDLRC-(between frames)-(degree)-(left or right)



VIEW "B - B"



UNIT			90°	45°
BF	CONV. SURFACE	OUTSIDE RADIUS	QTY. RLRS. WT. (lbs.)	QTY. RLRS. WT. (lbs.)
15"	12"	7'-1-1/2"	22 624	11 347
21"	18"	7'-1-1/2"	22 672	11 374
27"	24"	7'-1-1/2"	22 721	11 401
33"	30"	7'-1-1/2"	22 769	11 428
39"	36"	7'-1-1/2"	22 815	11 454
45"	42"	10'-3-3/4"	32 1244	16 672
51"	48"	10'-3-3/4"	32 1383	16 744
57"	54"	10'-3-3/4"	32 1531	16 827
63"	60"	10'-3-3/4"	32 1680	16 909

SPECIFICATIONS

TREAD ROLLERS: 2-1/2" dia. x 11 ga. steel, model 251S with sprockets.

CHAIN DRIVE: Roller to roller with No. 60 circular roller chain.

END DRIVE: Reversible drive either side mounted or underside (specify). Main drive roller is supported by precision, heavy duty, lubricated, ball bearing units.

BEARINGS: Removable type, heavy duty, ball bearings, zinc plated, grease packed, labyrinth sealed.

ROLLER CENTERS: 6" RC measured at outside radius of curve.

MOTOR DRIVE: 3/4 HP, 230/460/3, 60 cycle, ODP right angle gear motor.

SPEED: 35 FPM, constant.

BED: 6" x 1-1/2" x 7 ga. and 4" x 1-1/2" x 7 ga. formed steel channel frame.

CHAIN GUARD: The chain drive is enclosed, top and bottom, along the entire length of the conveyor.

DRIVE LOCATION: Drive located on outside of curve. Specify right hand drive or left hand drive (drive hand determined with reference point located at outside of curve).

ELECTRICAL CONTROLS: Optional.

HP @ 35FPM	"C"
3/4	13"
1	13-1/4"
1-1/2	14-1/8"
2	15"

OPTIONAL EQUIPMENT

BED: Rollers on 4-1/2" centers on outside radius.

SPEED: Constant speed 1.5-60 FPM; DC variable speed; AC inverter variable speed. Other constant or variable speeds available.

NOTE: CAPACITY CHANGES WITH SPEED. 100 FPM MAX. WITH ROLLER-TO-ROLLER CHAIN DRIVE.

MOTORS: Available through 3 HP in TEFC, explosion proof, dirty duty, 115/230/1, 575/3, etc.

FLOOR SUPPORTS: Supports, knee braces, casters, and polytler supports available. See Conveyor Accessories.

*NOTE: Orientation of product may be affected because of straight rollers in curve. To maintain orientation, use tapered roller curve.

■ 4 week shipment



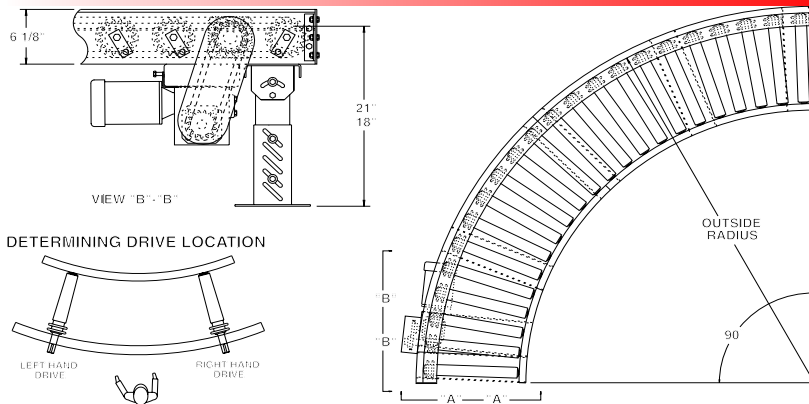
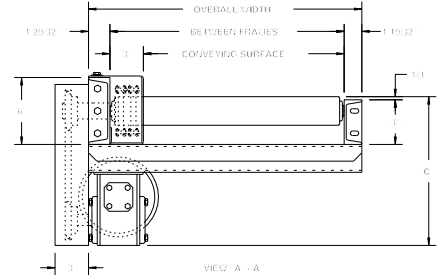
MODEL 297CDLRC HEAVY DUTY CHAIN DRIVEN LIVE ROLLER CURVE



Conveyor shown with optional supports

Model 297CDLRC features structural steel channel frames for conveying heavy unit loads. Heavy castings, drums and numerous other loads not requiring product orientation may be transported on this heavy duty chain driven live roller curve.

SPECIFY MODEL NUMBER PER EXAMPLE
297CDLRC-57-45-R
 297CDLRC-(between frames)-(degree)-(left or right)



UNIT		90°		45°		
BF	CONV. SURFACE	OUTSIDE RADIUS	QTY. RLRS.	WT (lbs.)	QTY. RLRS.	WT (lbs.)
15"	12"	7'-1-1/2"	22	695	11	383
21"	18"	7'-1-1/2"	22	768	11	422
27"	24"	7'-1-1/2"	22	836	11	458
33"	30"	7'-1-1/2"	22	895	11	491
39"	36"	7'-1-1/2"	22	962	11	528
45"	42"	10'-3-3/4"	32	1489	16	795
51"	48"	10'-3-3/4"	32	1656	16	880
57"	54"	10'-3-3/4"	32	1831	16	977

SPECIFICATIONS

TREAD ROLLERS: 2-9/16" dia. x 7 ga. steel, model 297S with sprockets.*

CHAIN DRIVE: Roller to roller with No. 60 circular roller chain.

END DRIVE: Reversible drive, either side mounted or underside (specify). Main drive roller is supported by precision, heavy duty, lubricated, ball bearing units.

CHAIN GUARD: Chain drive is enclosed, top and bottom, along entire length of conveyor.

ROLLER CENTERS: 6" RC measured at outside radius of curve.

BED: 4" at 5.4 lbs. and 6" at 8.2 lbs. structural steel channel frame.

BEARINGS: Removable type, heavy duty, ball bearings, zinc plated, grease packed, labyrinth sealed.

MOTOR DRIVE: 3/4 HP, 230/460/3, 60 cycle, ODP right angle gear motor.

SPEED: 35 FPM, constant.

DRIVE LOCATION: Drive located on outside of curve. Specify right hand drive or left hand drive (drive hand determined with reference point located at outside of curve).

ELECTRICAL CONTROLS: Optional.

HP @ 35FPM	"C"
3/4	13"
1	13-1/4"
1-1/2	14-1/8"
2	15"

OPTIONAL EQUIPMENT

BED: Rollers on 4-1/2" centers on outside radius.

SPEED: Constant speed 1.5-60 FPM; DC variable speed; AC inverter variable speed. Other constant or variable speeds available.

NOTE: CAPACITY CHANGES WITH SPEED. 100 FPM MAX. WITH ROLLER-TO-ROLLER CHAIN DRIVE.

MOTORS: Available through 3 HP in TEFC, explosion proof, dirty duty, 115/230/1, 575/3, etc.

FLOOR SUPPORTS: Supports, knee braces, casters, and polytier supports available. See Conveyor Accessories.

*NOTE: Orientation of product may be affected because of straight rollers in curve. To maintain orientation, use tapered roller curve.



■ 4 week shipment