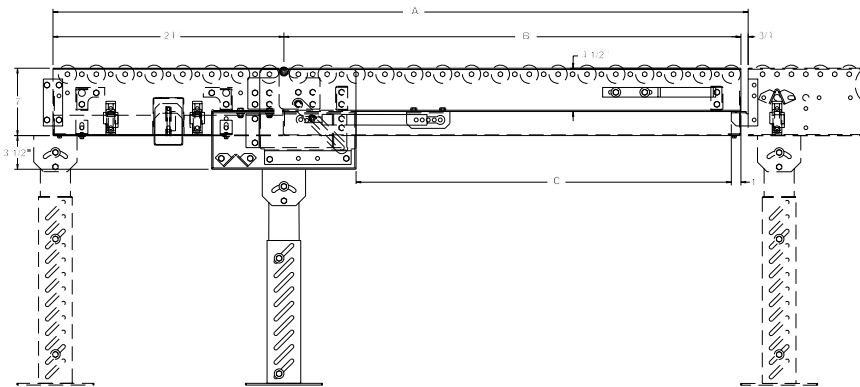
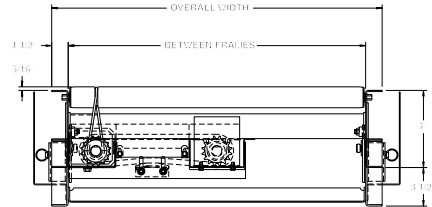


# MODEL 796LSG LINE SHAFT GATE MODULE

Conveyor shown with optional supports



Model 796LSG offers the ultimate versatility--it is driven by 796LS so no drive is required and it offers operator accessibility eliminating dangerous walk-overs.



### OPTIONAL EQUIPMENT

**FLOOR SUPPORTS:** Supports, knee braces, casters, polytier supports & ceiling hangers available. See Conveyor Accessories.

**GUARD RAILS:** Consult factory for guard rails to be used with line shaft gate module.

### SPECIFICATIONS

**TREAD ROLLERS:** 1.9" dia. x 16 ga. steel, model 196S grooved.

**DRIVE BELT:** 3/16" dia., polyurethane belts. Nominal 15 lbs. per roller drive.

**DRIVE SHAFT:** 1" dia. C1018 cold rolled steel shaft, located on long side of spur.

**COUPLINGS:** Couplings located on horizontal sections only.

**LIFT:** Gas cylinder provides assist for raising/lowering.

**BEARINGS:** Precision, lubricated, ball bearing units with composite housings.

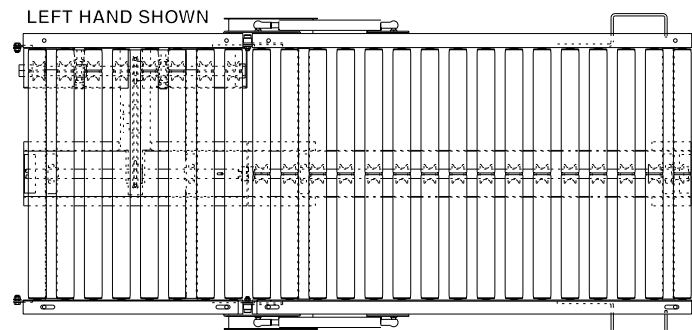
**BED:** 4-1/2" x 1-1/2" x 10 ga. formed steel channel frame on actual lift gate; 7" x 1-1/2" x 12 ga. on 2' horizontal section.

**MOTOR DRIVE:** Unit is designed to be driven by 796LS.

**SPECIFY HAND:** Specify if gate is left hand or right hand.

### GATE LENGTHS/OPENINGS

GATE	"A"	"B"	"C"
5'	60-1/4"	35-1/2"	26-7/8"
6'	72-1/4"	47-1/2"	38-7/8"
7'	84-1/4"	59-1/2"	50-7/8"



■ 4 week shipment

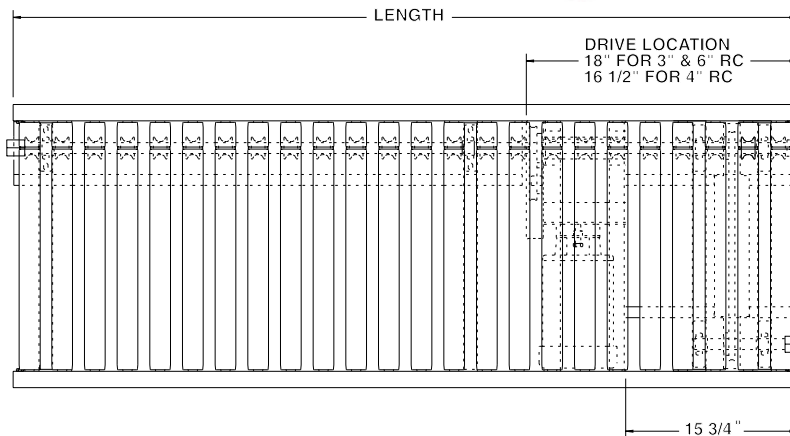
# MODEL 796LSX LINE SHAFT CROSS-OVER MODULE

24 HOUR SHIPMENTS INCLUDE ALL 1-FOOT INCREMENTS 2'-0" TO 10'-0"

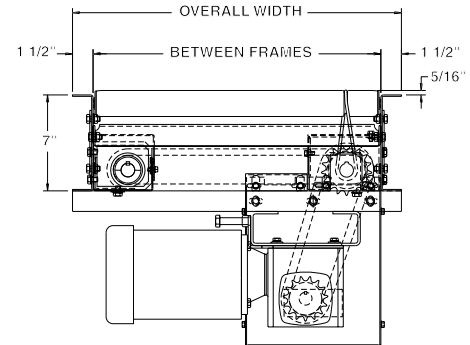


Conveyor shown with optional supports

Roach cross-over module 796LSX was designed to offer a standard component to eliminate confusion over cross-overs. Available in 2'-10' lengths in 24 hours, Roach model 796LSX is the only component required to cross over drive shaft.



**SPECIFY MODEL NUMBER PER EXAMPLE**  
**796LSX-21-3-10-R**  
 796LSX-(between frames)-(roller centers)-(length)-  
 (left or right)



RC	3"	4"	6"	3"	4"	6"
BF	10' UNIT WEIGHTS			UNIT WEIGHTS / FT.		
15"	455	427	389	26	23	20
19"	487	453	419	29	25	22
21"	507	470	433	31	27	24
25"	536	494	451	35	31	27
27"	558	513	468	37	33	28
33"	601	548	495	43	39	32
39"	657	595	533	49	43	37

## SPECIFICATIONS

**TREAD ROLLERS:** 1.9" dia. x 16 ga. steel, model 196S grooved.

**DRIVE BELT:** 3/16" dia., polyurethane belts. Nominal 15 lbs. per roller drive.

**DRIVE SHAFT:** 1" dia. C1018 cold rolled steel shaft.

**COUPLINGS:** Couplings located both ends or one end only. Specify where couplings required.

**BEARINGS:** Precision, lubricated, ball bearing units with composite housings.

**SPEED:** 60 FPM constant.

**BED:** 7" x 1-1/2" x 12 ga. formed steel channel frame.

**MOTOR DRIVE:** 1/3 HP, 230/460/3, 60 cycle, ODP right angle gear motor.

**CROSS OVER DIRECTION:** Specify "cross over to right hand" or "cross over to left hand".

**ELECTRICAL CONTROLS:** Optional.

## OPTIONAL EQUIPMENT

**GUARD RAILS:** 1-3/4" x 1" formed channel (model GC), adjusts horizontally to 8" wider than roller and vertically to 6" above roller; formed steel fixed (model FSG in 2", 4" & 6" heights; fixed channel (model FC); 1-1/2" angle (model GA1-1/2). See Conveyor Accessories.

**FLOOR SUPPORTS:** Supports, knee braces, casters, ceiling hangers and polytier supports available. See Conveyor Accessories.

**CONVEYOR SPEED:** Constant speed 15-120 FPM; DC variable speed; AC inverter variable speed. MINIMUM operating speed for line shaft conveyor is 30 FPM.

**ELECTRICAL CONTROLS:** Magnetic starter (one direction or reversible); Others available. Consult factory.



■ 24 hour shipment