

# MODEL 796LSS LINE SHAFT CONVERGING SPUR MODULE



Conveyor shown with optional supports

Line shaft converging spur modules, model 796LSS, allow product to flow from spur lines and merge onto straight line shaft driven conveyor. Spur modules are designed to be driven by 796LS, thus decreasing overall number of drives in the conveyor system.

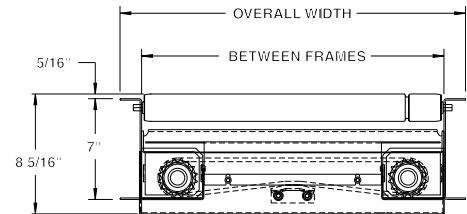
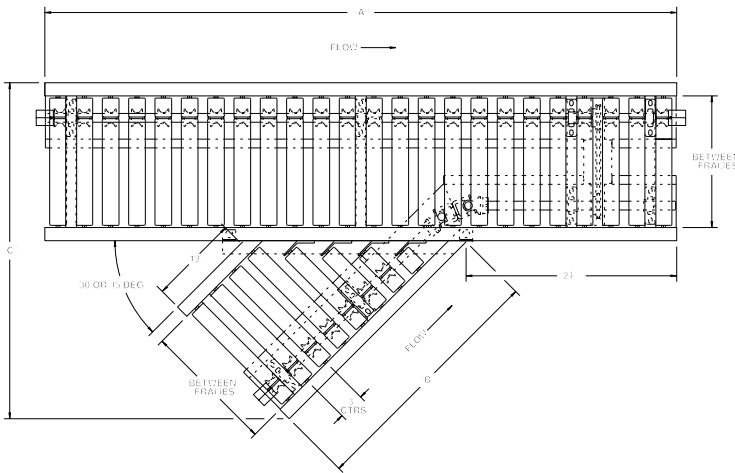
**SPECIFY MODEL NUMBER PER EXAMPLE**  
**796LSS-45-21-R**

796LSS-(spur degree)-(between frames)-(left or right)

Available in 30° or 45°. Specify 796LSSO for spur module only less mainline module (similar to photo below).



Model 796LSSOX, spur only with powered crossover, shown above.



## SPECIFICATIONS

**TREAD ROLLERS:** 1.9" dia. x 16 ga. steel, model 196S grooved, 3" centers.

**DRIVE BELT:** 3/16" dia., polyurethane belts. Nominal 15 lbs. per roller drive.

**DRIVE SHAFT:** 1" dia. C1018 cold rolled steel shaft. NOTE: Spools in spur section only are keyed to provide positive drive (designed not to slip on drive shaft).

**COUPLINGS:** Couplings located both ends or one end only. Specify where couplings required.

**BED:** 7" x 1-1/2" x 12 ga. formed steel channel frame. Short side of spur is always 12" overall length.

**BEARINGS:** Precision, lubricated, ball bearing units with composite housings.

**MOTOR DRIVE:** Unit is designed to be driven by 796LS.

**ROLLER CHAIN:** Spur driven via crossover with No. 40 chain.

BF	15"	19"	21"	25"	27"	33"	39"
SPUR	UNIT WEIGHTS (lbs.)						
45°	215	234	244	271	285	391	417
30°	230	249	264	372	392	521	619

## OPTIONAL EQUIPMENT

**FLOOR SUPPORTS:** Supports, knee braces, casters, polytier supports & ceiling hangers available. See Conveyor Accessories.

**GUARD RAILS:** 1-3/4" x 1" formed channel (model GC), adjusts horizontally to 8" wider than roller and vertically to 6" above roller; formed steel fixed (model FSG in 2", 4" and 6" heights; fixed channel (model FC); 1-1/2" angle (model GA1-1/2). See Conveyor Accessories.

NOTE: Specify "right hand" or "left hand". To determine hand of spur, refer to Technical Section.

	30° SPUR			45° SPUR		
BF	"A"	"B"	"C"	"A"	"B"	"C"
15"	6'	40-7/8"	38-3/8"	6'	28-5/8"	38-1/4"
19"	8'	47-3/4"	45-7/8"	8'	32-5/8"	45-1/8"
21"	8'	51-1/4"	49-5/8"	8'	34-5/8"	48-1/2"
25"	8'	58-1/8"	57-1/8"	8'	38-5/8"	55-3/8"
27"	8'	61-5/8"	60-3/4"	8'	40-5/8"	58-3/4"
33"	10'	72"	72"	10'	46-5/8"	69"
39"	10'	82-3/8"	83-1/4"	10'	52-5/8"	79-1/4"



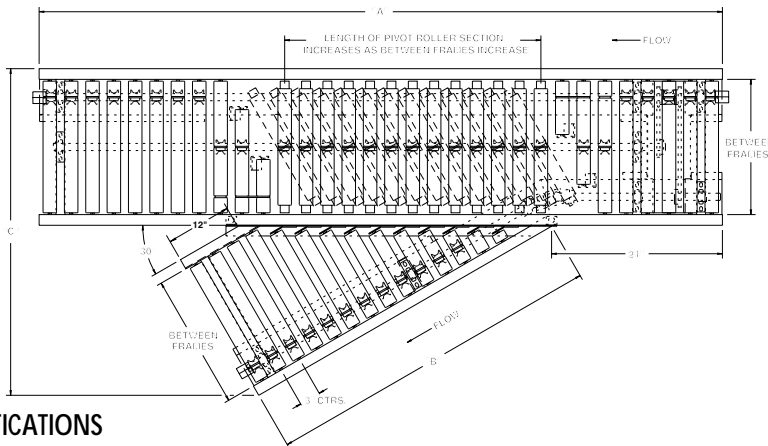
■ 4 week shipment

# MODEL 796LSDS LINE SHAFT DIVERGING SWITCH MODULE



Conveyor shown with optional supports

796LSDS is used in diverging applications where line shaft conveyor is suitable. The pivot section of rollers, pneumatically actuated, skews to divert packages onto spur quickly and efficiently.



## SPECIFICATIONS

**TREAD ROLLERS:** 1.9" dia. x 16 ga. steel, model 196S grooved.

**DRIVE BELT:** 3/16" dia., polyurethane belts. Nominal 15 lbs. per roller drive.

**DRIVE SHAFT:** 1" dia. C1018 cold rolled steel shaft. NOTE: Spools in spur and spools in pivot roller section are keyed to provide positive drive (designed not to slip on drive shaft).

**COUPLINGS:** Couplings located both ends or one end only. Specify where couplings required.

**BED:** 7" x 1-1/2" x 12 ga. formed steel channel frame. Short side of spur is always 12" overall length.

**ROLLER CHAIN:** Spur driven via cross-over with No. 40 chain.

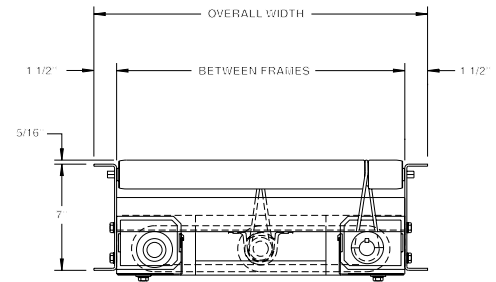
**BEARINGS:** Precision, lubricated, ball bearing units with composite housings.

**PNEUMATICALLY ACTUATED:** Diverging section of rollers is pneumatically actuated utilizing 60PSI maximum.

**MOTOR DRIVE:** Unit is designed to be driven by 796LS.

**DIRECTION OF FLOW:** Specify right hand or left hand. To determine hand of spur, refer to pg. 136 in technical section.

**MINIMUM PACKAGE SIZE:** Consult factory for minimum package size (minimum size may vary based on conveyor width).



## OPTIONAL EQUIPMENT

**FLOOR SUPPORTS:** Supports, knee braces, casters, polytier supports & ceiling hangers available. See Conveyor Accessories.

**GUARD RAILS:** 1-3/4" x 1" formed channel (model GC), adjusts horizontally to 8" wider than roller and vertically to 6" above roller; formed steel fixed (model FSG in 2", 4" and 6" heights; fixed channel (model FC); 1-1/2" angle (model GA1-1/2). See Conveyor Accessories.

BF	"A"	"B"	"C"	WT. (lbs.)
15"	6'-0"	40-7/8"	38-3/8"	290
19"	8'-0"	47-3/4"	45-7/8"	310
21"	8'-0"	51-1/4"	49-5/8"	325
25"	8'-0"	58-1/8"	57-1/8"	380
27"	8'-0"	61-5/8"	60-3/4"	526
33"	10'-0"	72"	72"	586
39"	10'-0"	82-3/8"	83-1/4"	678

NOTE: This unit is not designed for high-rate sortation. Consult factory for high-rate applications.



■ 4 week shipment