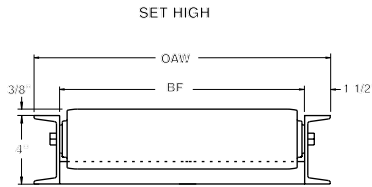
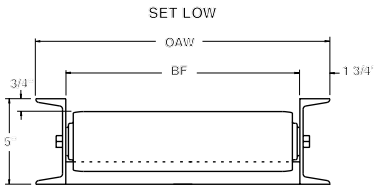
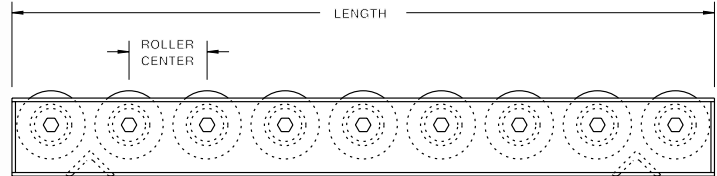


# MODEL 3509S 3-1/2" DIA. X 9 GA. STEEL GRAVITY ROLLER CONVEYOR

24 HOUR SHIPMENTS INCLUDE ALL 1-FOOT INCREMENTS 1'-0" TO 10'-0" ON STRAIGHT SECTIONS

**STRAIGHT SECTION MODEL NUMBER**  
**3509S-47-4-H-3**  
 3509S-(between frames)-(roller centers)-  
 (set high or low)-(length)



## SPECIFICATIONS

**ROLLERS:** 3-1/2" x 9 ga. steel tubing, model 3509S, with straight ends, reamed to provide smooth bearing seats.

**ROLLER CAPACITY:** 700 lbs. per roller.

**AXLES:** 11/16" hex shaft, spring loaded.

**FRAMES:** 4" at 5.4 lbs. structural steel painted channel set high; 5" at 6.7 lbs. structural steel painted channel set low (extra charge for set low).

**COUPLINGS:** Butt type.

**BEARINGS:** Removable type, heavy duty ball bearings, zinc plated, grease packed.

**FRAME CAPACITY:** 3750 lbs. maximum distributed live load per 10' section with supports at 10' centers; 8000 lbs. at 5' centers.

STRAIGHT SECTIONS									
NOMINAL ROLLER LENGTH	BETWEEN FRAMES	4" RC 10'	4" RC 5'	6" RC 10'	6" RC 5'	8" RC 10'	8" RC 5'	12" RC 10'	12" RC 5'
10"	11"	364	184	286	145	247	125	208	106
14"	15"	439	221	338	171	288	146	238	121
18"	19"	513	256	391	197	329	166	268	136
22"	23"	587	295	443	223	370	187	297	150
26"	27"	662	333	495	249	412	208	328	166
30"	31"	737	370	548	276	453	228	358	181
34"	35"	811	407	599	299	493	248	388	194
38"	39"	886	445	652	328	535	269	418	211
42"	43"	960	482	704	355	576	288	448	226
44"	45"	997	501	726	367	596	299	463	234
46"	47"	1035	519	757	380	617	310	478	241
50"	51"	1110	557	807	405	658	331	508	256



**WARNING**

Prevent pinch points that exist when gravity conveyors are permanently attached to power conveyors and other equipment!

■ 24 hour shipment